

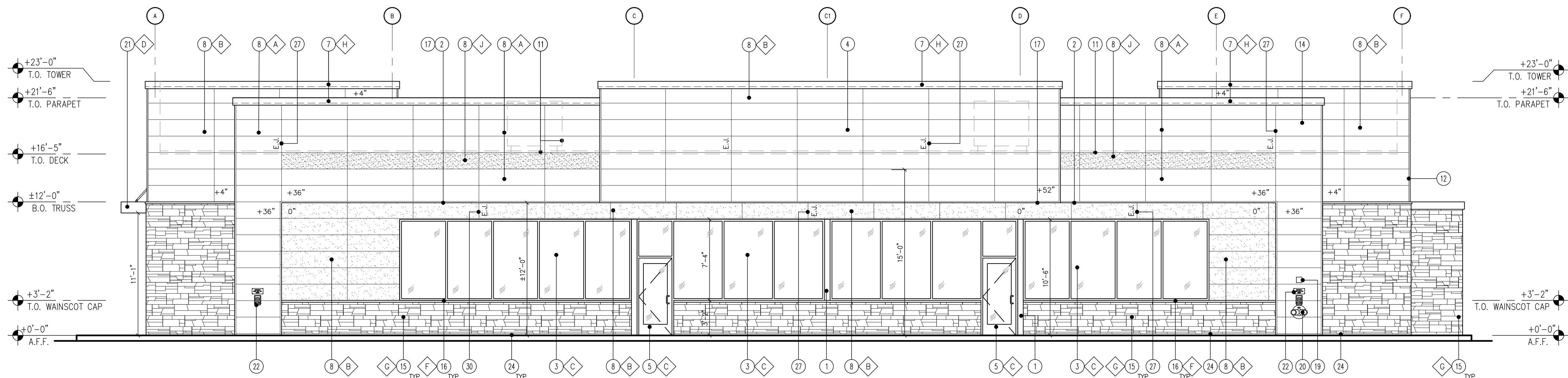
**KEY NOTES**

- STEEL COLUMN WRAP WITH BREAK METAL
- LINE OF CANOPY / SOFFIT
- DARK BRONZE ANODIZED WINDOW FRAME W/ GRAY TINTED GLASS PER SOLARBAN SOLARGRAY SPECS.
- POTENTIAL SIGN LOCATION (UNDER SEPARATE PERMIT)
- DARK BRONZE ANODIZED DOOR W/ GRAY TINTED GLASS STOREFRONT SYSTEM
- SERVICE DOOR, PAINT TO MATCH SURROUNDING WALL
- PRE-FINISHED METAL COPING
- NICHHA FIBER CEMENT WALL PANEL SYSTEM
- WALL MOUNTED LIGHT FIXTURE, COLOR: BRONZE.
- SES PANEL LOCATION.
- ROOF LINE AND HVAC UNITS
- 1-1/2" CORNER KEY EDGE, TYP. TO ALL CORNERS
- DOWNSPOUT.
- ADDRESSING LOCATION: 8" TALL INCH BLACK NUMBERS. FINAL AREA LOCATION TO BE DETERMINED BY FIRE DEPARTMENT.
- 1 3/8" THK. X 6" NICHHA KURASTONE HIGH FIBER CEMENT WAINSCOT
- 1-1/2" HIGH NICHHA FIBER CEMENT CAP INSTALL PER MFR. SPECS.
- FRY REGLET DRIP CAP
- PARAPET WALL BEYOND
- (KNDX) KEY-BOX AT 6'-0" AFF (IF REQUIRED BY FIRE DEPARTMENT)
- FIRE DEPARTMENT CONNECTION (IF REQUIRED)
- ALUMINUM AWNING WITH SUPPORT RODS ABOVE THE SIDE ENTRY DOOR BY CIRCLE K VENDOR. PROVIDE BLOCKING IN EXTERIOR WALL FOR AWNING AND SUPPORTS
- EMERGENCY FUEL SHUT-OFF SWITCH.
- INSULATED METAL DOOR
- NICHHA ESSENTIAL "STARTER" FLASHING
- CO2 TANK WITH METAL LOUVERED CONTAINER
- EXTERIOR FINISH TO EXTEND ABOVE SIDEWALK/GRADE.
- CONTROL/EXPANSION JOINT "E.J." LOCATION
- HARDSOFOFIT FIBER CEMENT PANELS
- SPANDREL GLASS WINDOW
- METAL LATTICE / GREEN SCREEN TO BE FREESTANDING, 1' OFF OF THE BUILDING

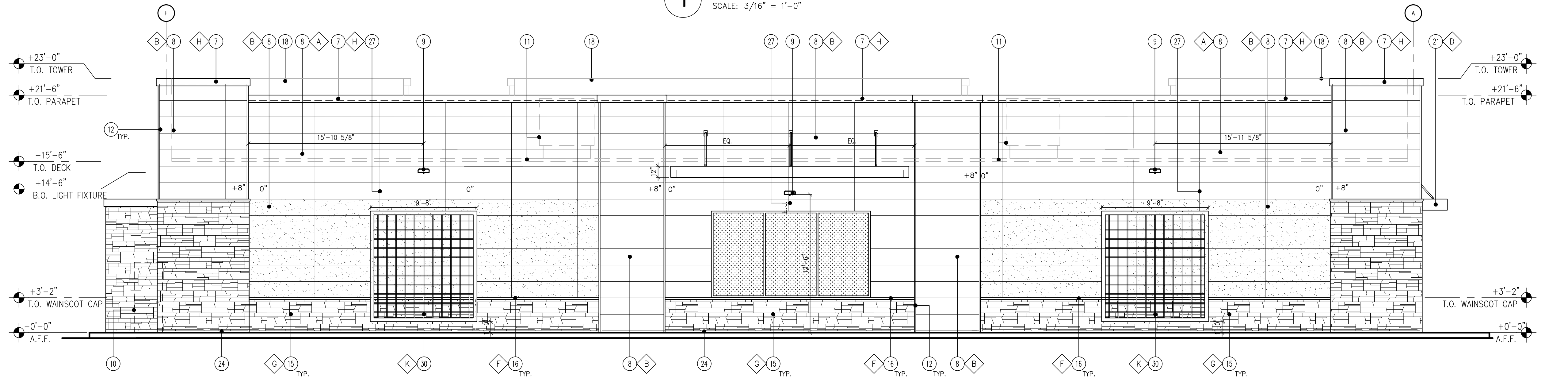
**FINISH SCHEDULE**

- A** - \*\*\*NICHHA TUFF BLOCK - COLOR TO MATCH #SW 6095 TOASTY
- B** - \*\*\*NICHHA TUFF BLOCK - COLOR TO MATCH #SW 6115 TOTALLY TAN
- C** - 1" INSULATED, DOUBLE PANED GRAY TINTED GLASS
- D** - \*SHERWIN WILLIAMS #SW 4081 - \*\*SAFETY RED
- E** - NOT USED
- F** - \*\*\*NICHHA CHISELED SILL TAN
- G** - \*\*\*NICHHA LEDGESTONE BLUFF
- H** - \*SHERWIN WILLIAMS #SW 6090 - JAVA - FIRESTONE MANSARD BROWN SR (USE FOR PRE-FINISHED METAL COPING)
- I** - NOT USED
- J** - \*\*\*NICHHA TUFF BLOCK - COLOR TO MATCH #SW 4081
- K** - \*SHERWIN WILLIAMS #SW 7022 - ALPACA - PAINT PRIMER: "LOXON" CONCRETE & MASONRY PRIMER/SEALER - PAINT PRIMER WITH A GREY TINT COLOR - PAINT TOP COAT: "SUPERPAINT" EXTERIOR ACRYLIC LATEX PAINT - SHEEN: SATIN

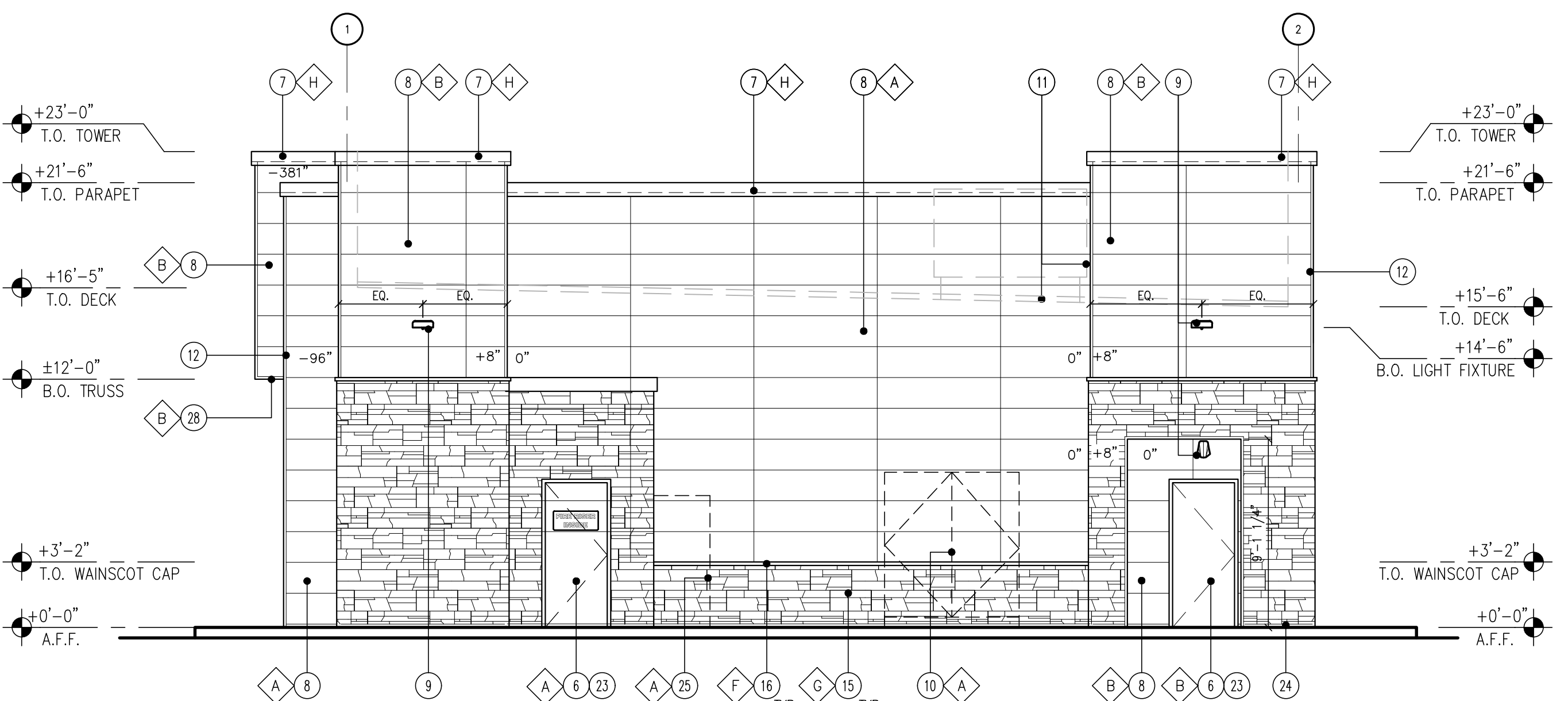
\* USE SHERWIN WILLIAMS MANUFACTURER ONLY  
 \*\* COLOR TO BE PRE-ORDERED TO ENSURE AVAILABILITY AT TIME OF CONSTRUCTION  
 \*\*\* PURCHASED BY CIRCLE K/INSTALLED BY G.C. G.C. TO COORDINATE WITH CK PM AND OWNER'S REP  
 circlek@nichha.com



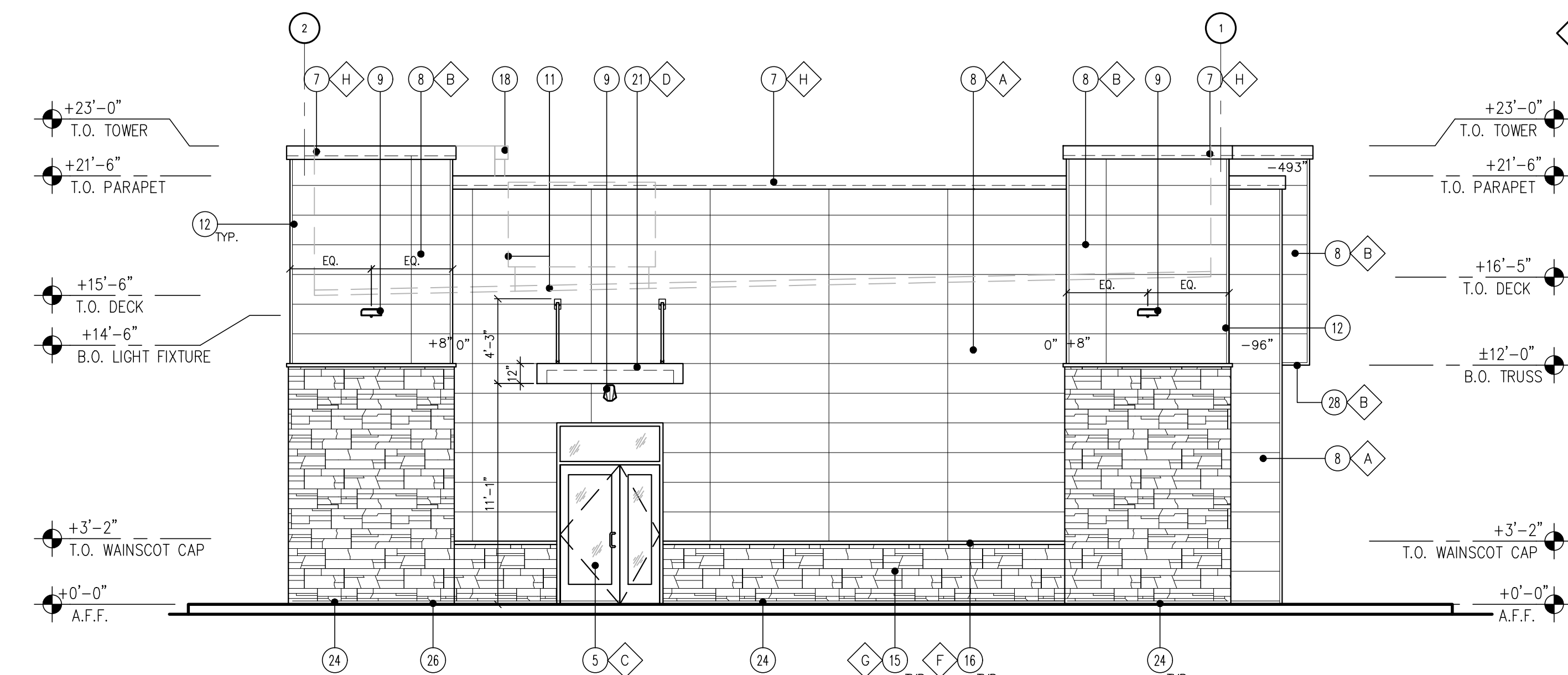
**1 FRONT ELEVATION (EAST)**  
 SCALE: 3/16" = 1'-0"



**2 BACK ELEVATION (WEST)**  
 SCALE: 3/16" = 1'-0"



**3 SIDE ELEVATION (NORTH)**  
 SCALE: 3/16" = 1'-0"



**4 SIDE ELEVATION (SOUTH)**  
 SCALE: 3/16" = 1'-0"



**CIRCLE K** BUILDING EXTERIOR ELEVATIONS 5200  
 5990 BASELINE RD ROSEVILLE, CA 20190856.0  
 SCALE: AS NOTED  
**A2.0**

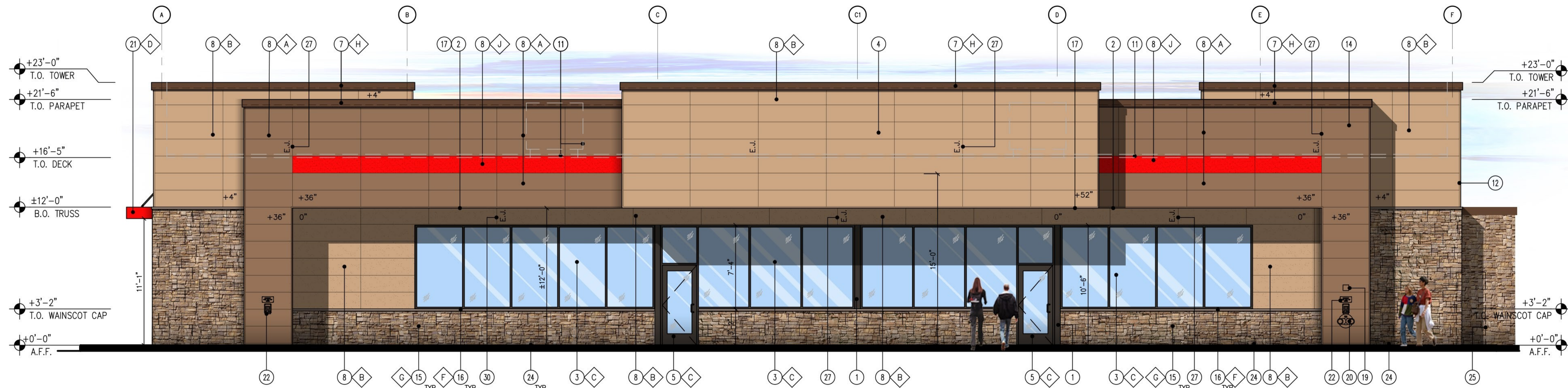
**KEY NOTES**

- STEEL COLUMN WRAP WITH BREAK METAL
- LINE OF CANOPY / SOFFIT
- DARK BRONZE ANODIZED WINDOW FRAME W/ GRAY TINTED GLASS PER SOLARBAN SOLARGRAY SPECS.
- POTENTIAL SIGN LOCATION (UNDER SEPARATE PERMIT)
- DARK BRONZE ANODIZED DOOR W/ GRAY TINTED GLASS STOREFRONT SYSTEM
- SERVICE DOOR, PAINT TO MATCH SURROUNDING WALL
- PRE-FINISHED METAL COPING
- NICHHA FIBER CEMENT WALL PANEL SYSTEM
- WALL MOUNTED LIGHT FIXTURE, COLOR: BRONZE.
- SES PANEL LOCATION
- ROOF LINE AND HVAC UNITS
- 1-1/2" CORNER KEY EDGE, TYP. TO ALL CORNERS
- DOWNSPOUT.
- ADDRESSING LOCATION: 8" TALL INCH BLACK NUMBERS. FINAL AREA LOCATION TO BE DETERMINED BY FIRE DEPARTMENT.
- 1 3/8" THK. X 6" NICHHA KURASTONE HIGH FIBER CEMENT WAINSCOT
- 1-1/2" HIGH NICHHA FIBER CEMENT CAP INSTALL PER MFR. SPECS.
- FRY REGLET DRIP CAP
- PARAPET WALL BEYOND
- (KNOX) KEY-BOX AT 6'-0" AFF (IF REQUIRED BY FIRE DEPARTMENT)
- FIRE DEPARTMENT CONNECTION (IF REQUIRED)
- ALUMINUM AWNING WITH SUPPORT RODS ABOVE THE SIDE ENTRY DOOR BY CIRCLE K VENDOR. PROVIDE BLOCKING IN EXTERIOR WALL FOR AWNING AND SUPPORTS
- EMERGENCY FUEL SHUT-OFF SWITCH.
- INSULATED METAL DOOR
- NICHHA ESSENTIAL "STARTER" FLASHING
- CO2 TANK WITH METAL LOUVERED CONTAINER
- EXTERIOR FINISH TO EXTEND ABOVE SIDEWALK/GRADE.
- CONTROL/EXPANSION JOINT "E.J." LOCATION
- HARDESOFFIT FIBER CEMENT PANELS
- SPANDREL GLASS WINDOW
- METAL LATTICE / GREEN SCREEN TO BE FREESTANDING, 1' OFF OF THE BUILDING

**FINISH SCHEDULE**

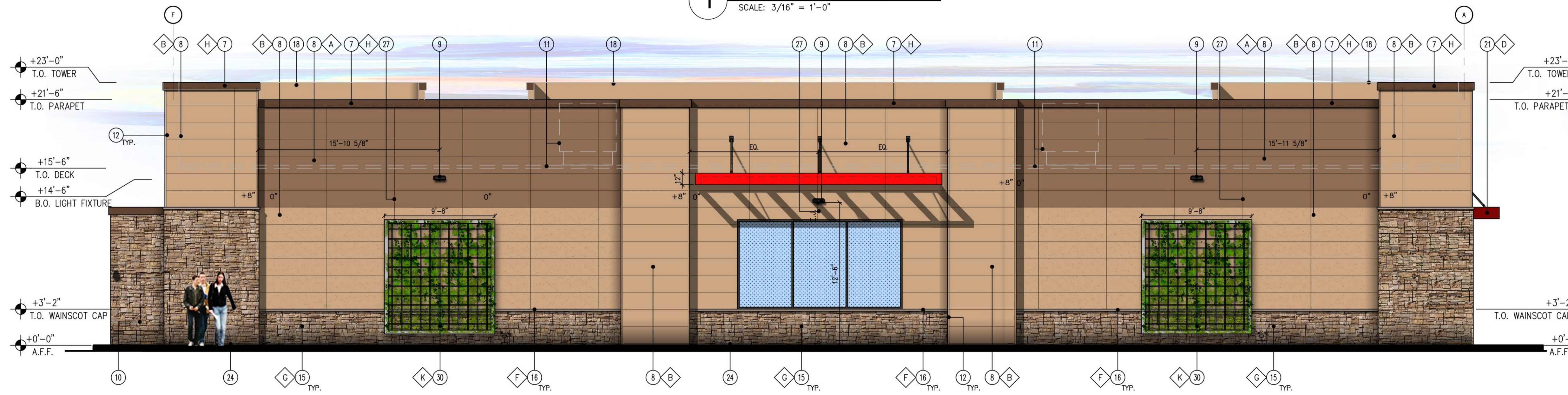
- A** - \*\*\*NICHHA TUFF BLOCK  
- COLOR TO MATCH #SW 6095 TOASTY
- B** - \*\*\*NICHHA TUFF BLOCK  
- COLOR TO MATCH #SW 6115 TOTALLY TAN
- C** - 1" INSULATED, DOUBLE PANED GRAY TINTED GLASS
- D** - SHERWIN WILLIAMS #SW 4081  
- \*\*SAFETY RED
- E** - NOT USED
- F** - \*\*\*NICHHA CHISELED SILL TAN
- G** - \*\*\*NICHHA LEDGESTONE BLUFF
- H** - SHERWIN WILLIAMS #SW 6090 - JAVA  
- FIRESTONE MANSARD BROWN SR (USE FOR PRE-FINISHED METAL COPING)
- I** - NOT USED
- J** - \*\*\*NICHHA TUFF BLOCK  
- COLOR TO MATCH #SW 4081
- K** - SHERWIN WILLIAMS #SW 7022  
- ALPACA  
- PAINT PRIMER: LOXON® CONCRETE & MASONRY PRIMER/SEALER  
- PAINT PRIMER WITH A GREY TINT COLOR  
- PAINT TOP COAT: "SUPERPAINT" EXTERIOR ACRYLIC LATEX PAINT  
- SHEEN: SATIN

\* USE SHERWIN WILLIAMS MANUFACTURER ONLY  
\*\* COLOR TO BE PRE-ORDERED TO ENSURE AVAILABILITY AT TIME OF CONSTRUCTION  
\*\*\* PURCHASED BY CIRCLE K/INSTALLED BY G.C. G.C. TO COORDINATE WITH GK PM AND OWNER'S REP. circlek@nichha.com



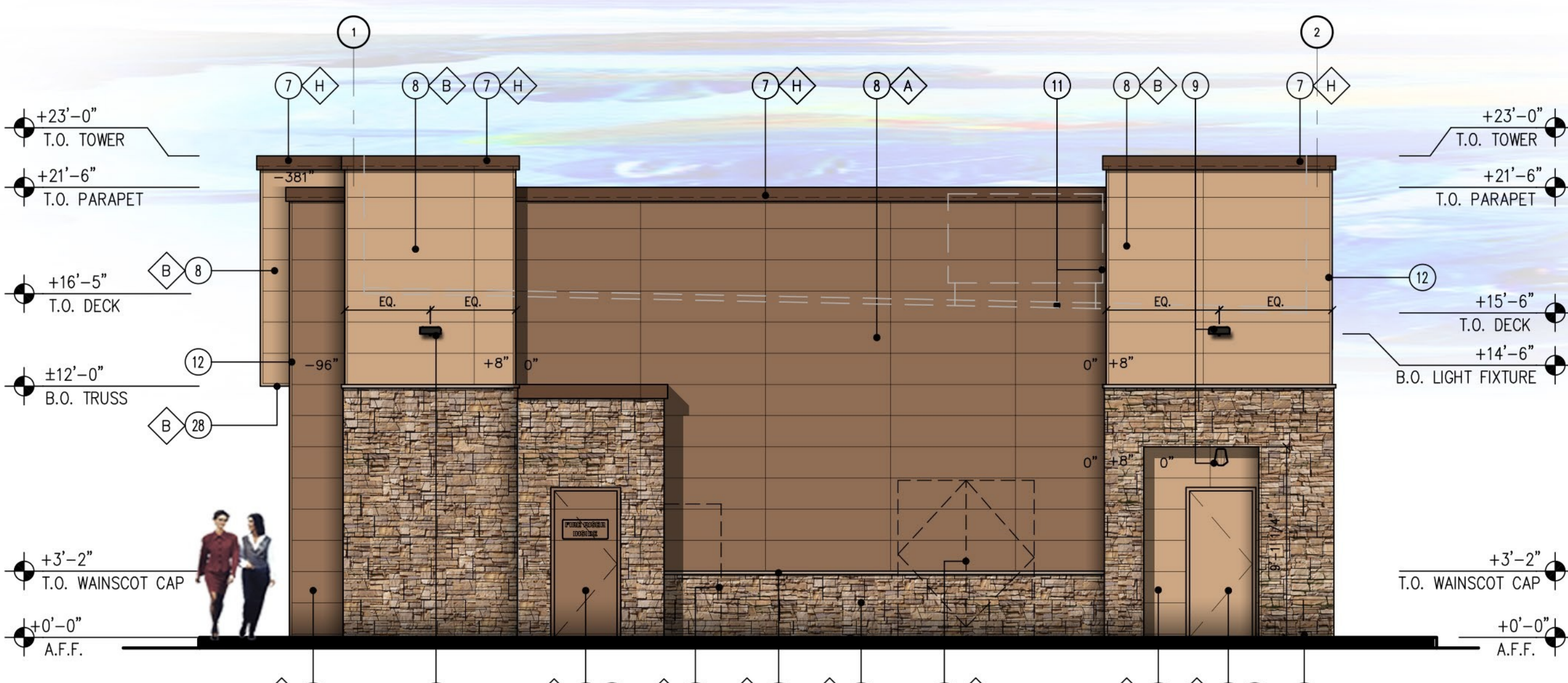
**1 FRONT ELEVATION (EAST)**

SCALE: 3/16" = 1'-0"



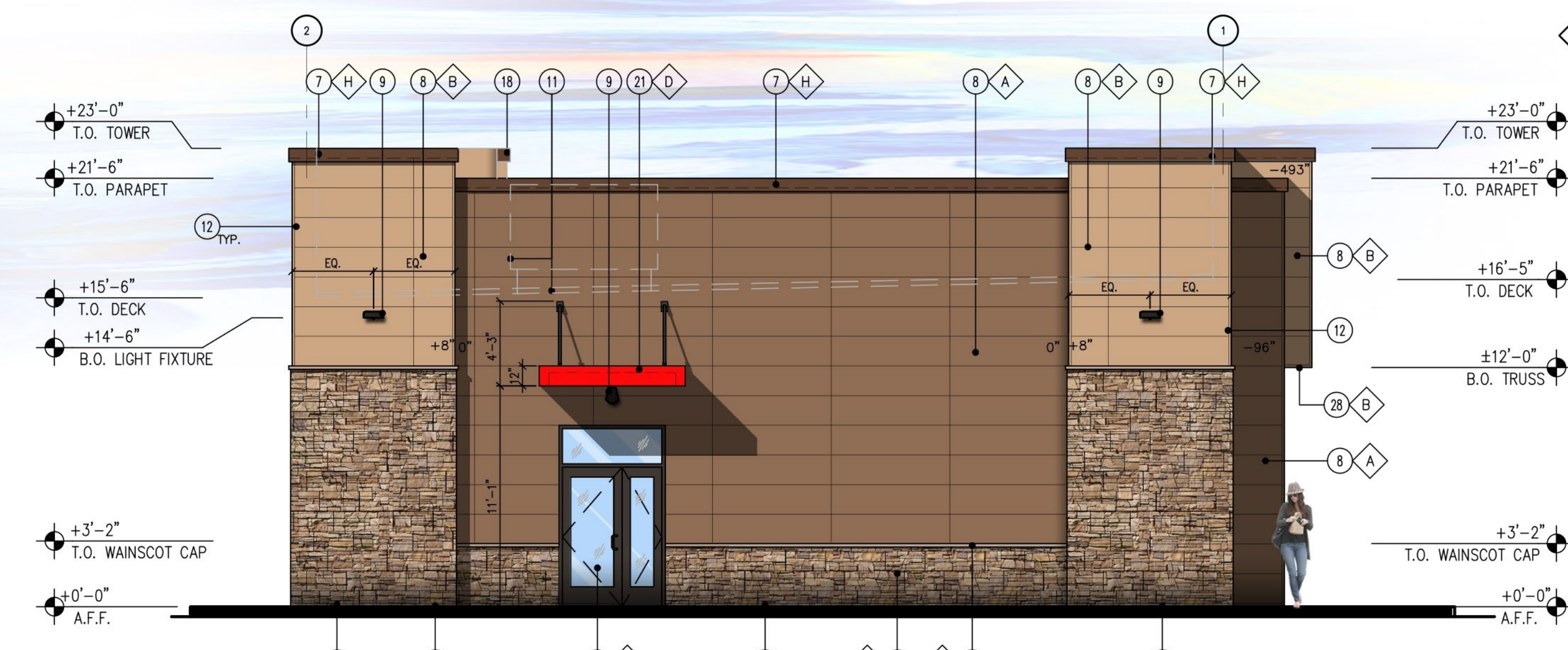
**2 BACK ELEVATION (WEST)**

SCALE: 3/16" = 1'-0"



**3 SIDE ELEVATION (NORTH)**

SCALE: 3/16" = 1'-0"



**4 SIDE ELEVATION (SOUTH)**

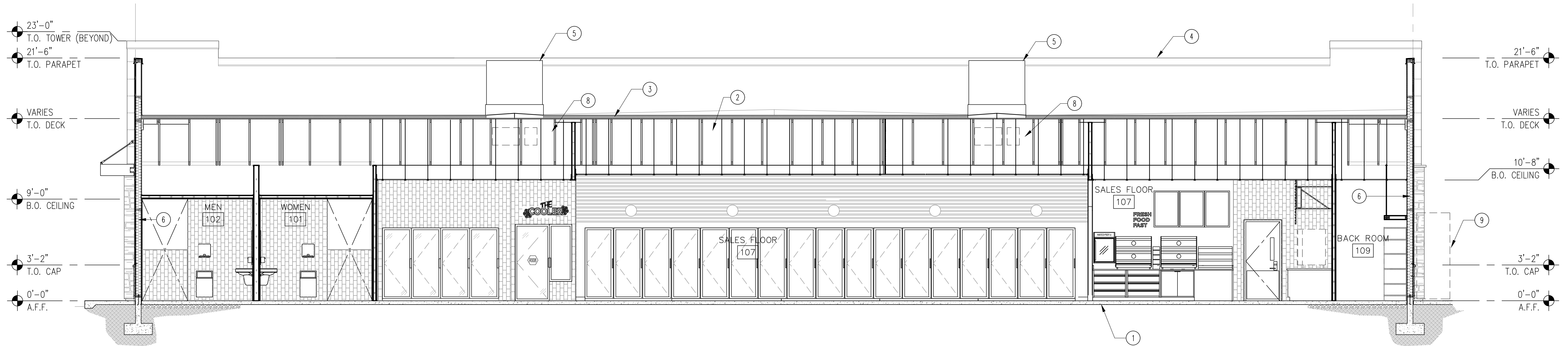
SCALE: 3/16" = 1'-0"



**CIRCLE K** BUILDING EXTERIOR ELEVATIONS 5200  
 NEC BASELINE ROAD & WESTBROOK BOULEVARD  
 ROSEVILLE, CA 20190856.0  
 SCALE: AS NOTED  
**A2.0**

KEY NOTES (X)

1. CONCRETE SLAB WITH MINIMUM 15ML VAPOR BARRIER LAPPED A MINIMUM OF 6" & TAPED PER MANUFACTURER'S SPECIFICATIONS, SEE STRUCTURAL CONCRETE SLAB, SEE STRUCTURAL FOR REINFORCING.
2. ROOF JOIST, SEE STRUCTURAL DRAWINGS FOR SPECIFIC INFORMATION.
3. TPO ROOFING SYSTEM OVER RIGID INSULATION. WALKWAYS AS REQUIRED BY ROOFING MANUFACTURE.
4. PARAPET BEYOND
5. ROOF TOP HVAC UNIT, SEE MECHANICAL DRAWINGS.
6. R-21 BATT INSULATION
7. WALK IN FREEZER/COOLER WALL
8. ALL DUCT WORK TO GO THROUGH TRUSSES - SEE MECH.
9. SWITCHGEAR CABINET BEYOND
10. NOT USED
11. SIGN BY VENDOR, SUBMITTED UNDER SEPARATE PERMIT.
12. PARAPET BRACE, SEE ROOF PLAN



**1** BUILDING SECTION  
SCALE: 1/4" = 1'-0"

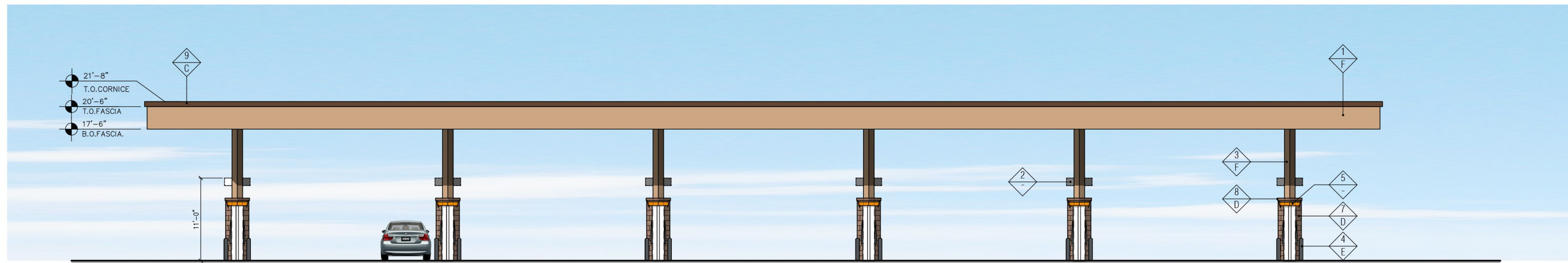


**3** "SIDE" ELEVATION (NORTH)  
SCALE: 1/8" = 1'-0"

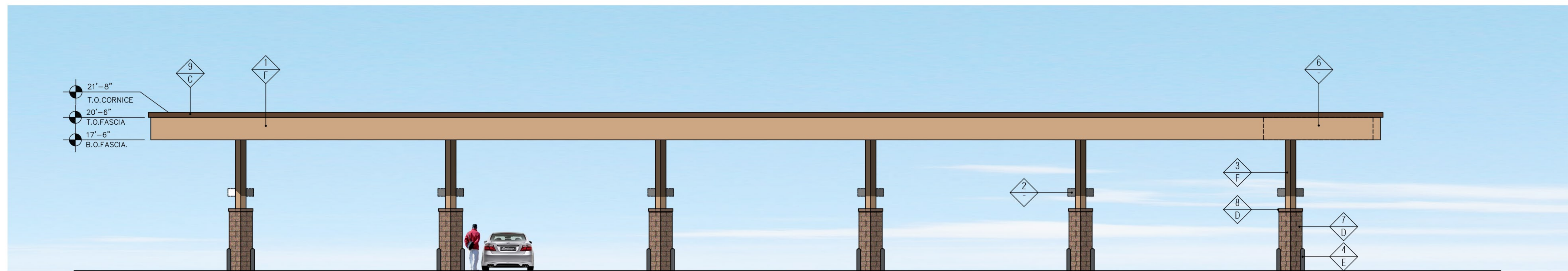
**4** "SIDE" ELEVATION (SOUTH)  
SCALE: 1/8" = 1'-0"

FINISH SCHEDULE	
▲ FINISH MATERIAL	
1	ACM PANEL
2	COLUMN FLAGS BY SIGNAGE VENDOR
3	STEEL COLUMN WITH PAINT FINISH
4	6" Ø BOLLARD, 36" HIGH
5	FUEL PUMP
6	POTENTIAL SIGN LOCATION (UNDER SEPARATE PERMIT)
7	4X8X16 CMU VENEER, SPLIT FACE, GROUTED TO MATCH CMU COLOR
8	4X8X16 SOLID CMU CAP, INSTALL PER MFR. SPECS.
9	PRE-FINISHED METAL COPING
▼ FINISH COLOR	
A	NOT USED
B	NOT USED
C	FIRESTONE MANSARD BROWN SR (FOR PRE-FINISHED METAL COPING) OR MATCH SHERWIN WILLIAMS - #SW6090 - JAVA
D	SUPERLITE BLOCK SPLITFACE CMU - "BOOT BROWN"
E	PVC BOLLARD SLEEVE "DARK GRAY"
F	SHERWIN WILLIAMS - SW6115 - TOTALLY TAN

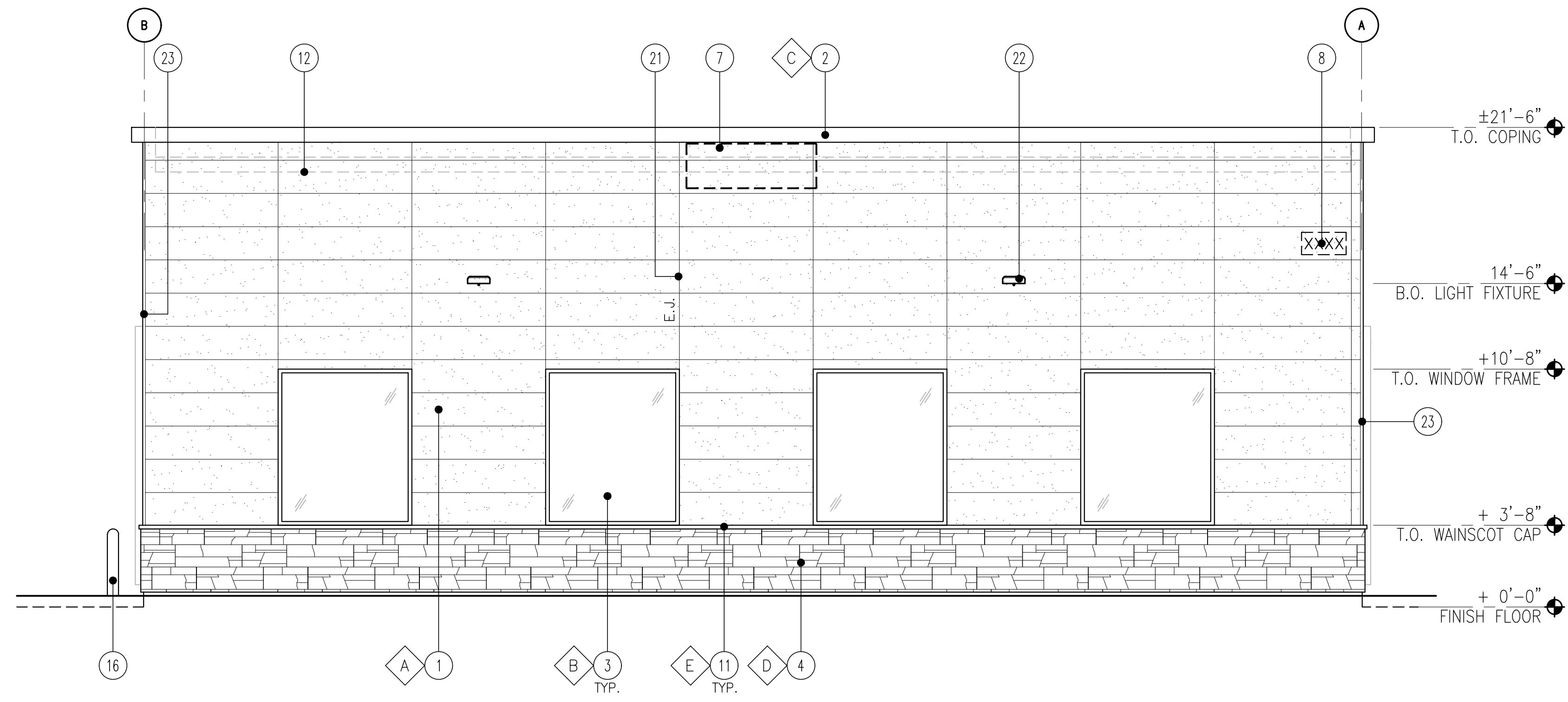
Notes:  
 1. Colors shown on these elevations are for illustration purposes only. For actual colors, refer to manufacturer's samples.  
 2. The fascia panels are pre-finished by signage vendor.  
 3. All signs require a separate submittal.  
 4. All lighting on canopy to be flush mounted with fascia.



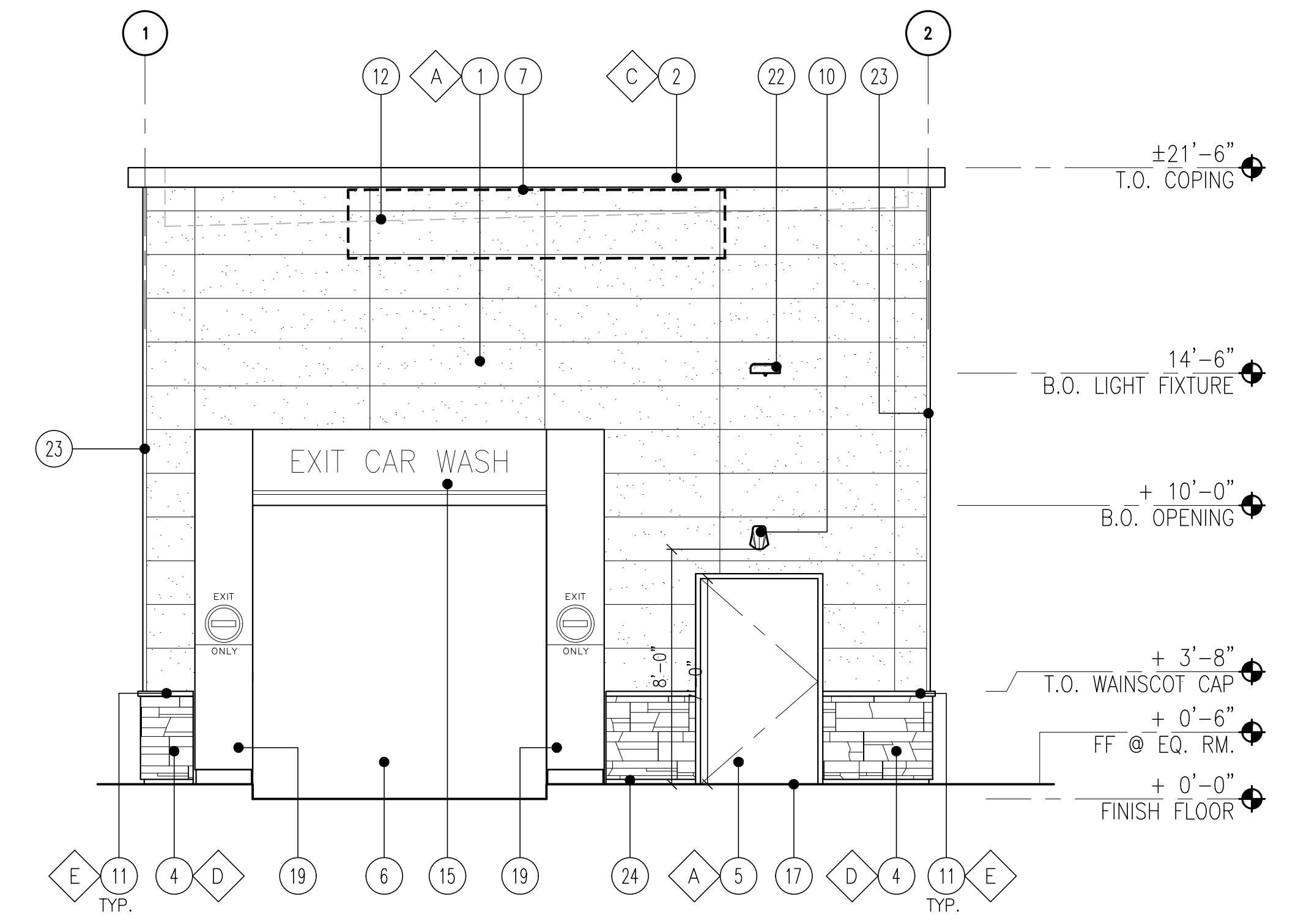
**2** "FRONT" ELEVATION (EAST)  
SCALE: 1/8" = 1'-0"



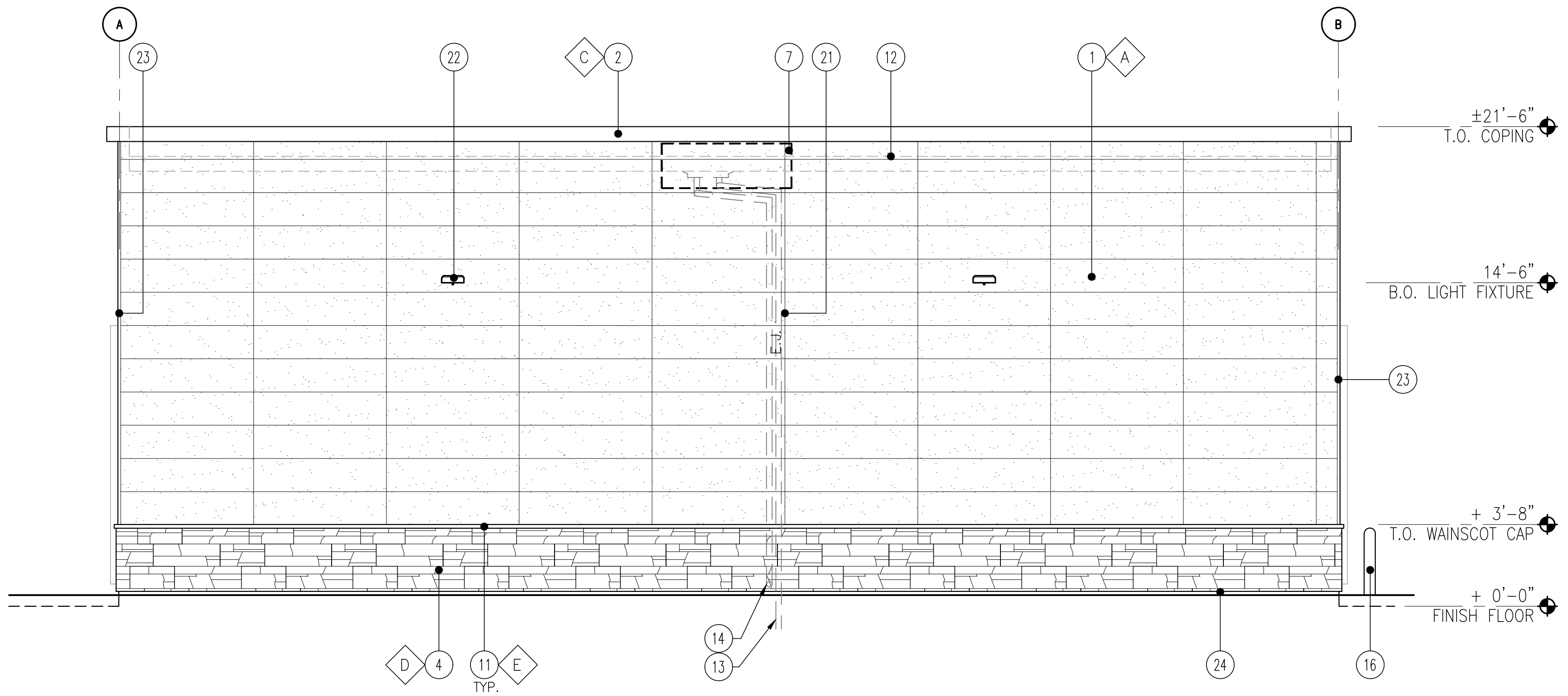
**1** "REAR" ELEVATION (WEST)  
SCALE: 1/8" = 1'-0"



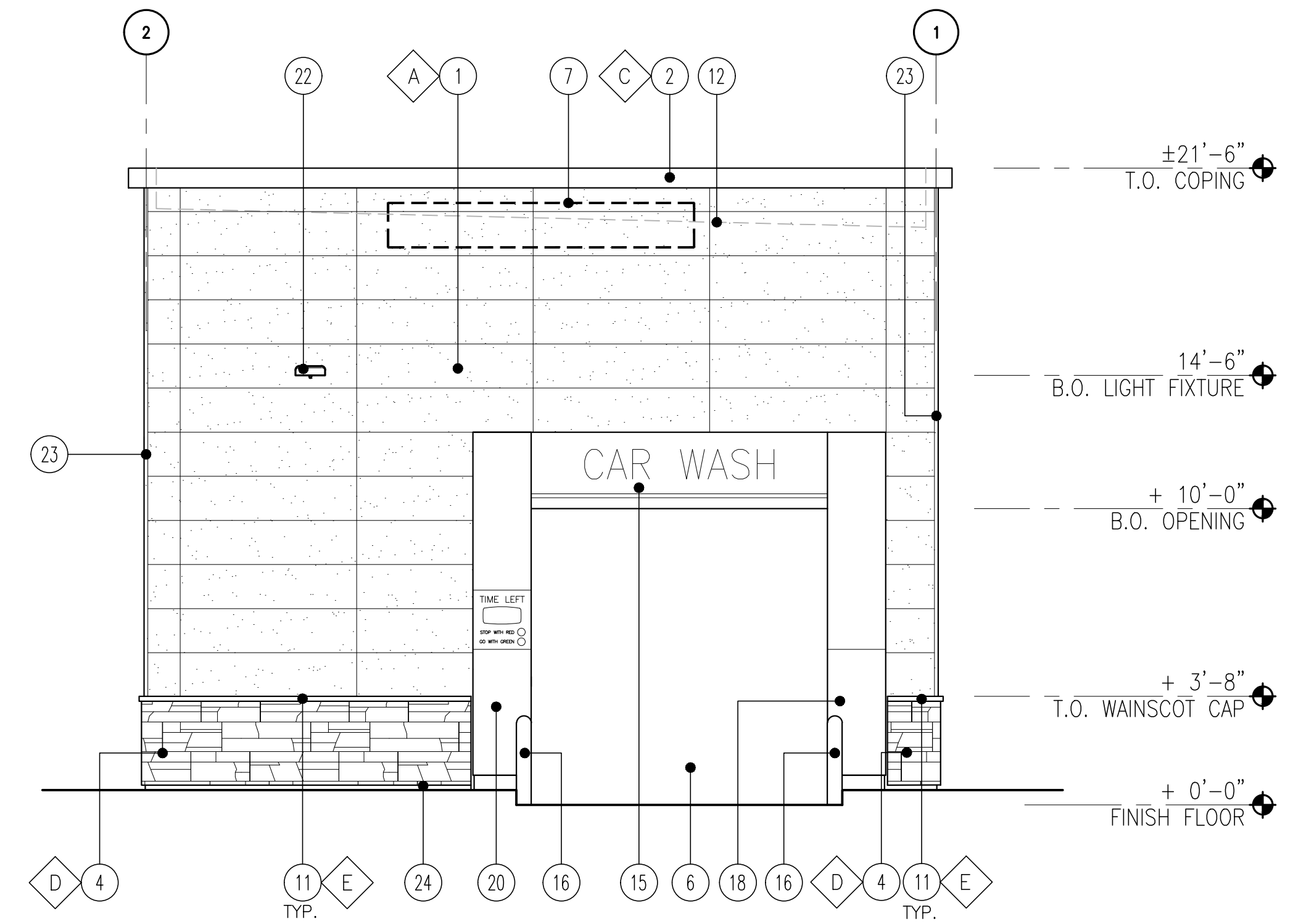
**4 SIDE ELEVATION - WEST**  
SCALE: 1/4" = 1'-0"



**2 REAR ELEVATION - SOUTH**  
SCALE: 1/4" = 1'-0"



**3 SIDE ELEVATION - EAST**  
SCALE: 1/4" = 1'-0"



**1 FRONT ELEVATION - NORTH**  
SCALE: 1/4" = 1'-0"

**KEY NOTES**

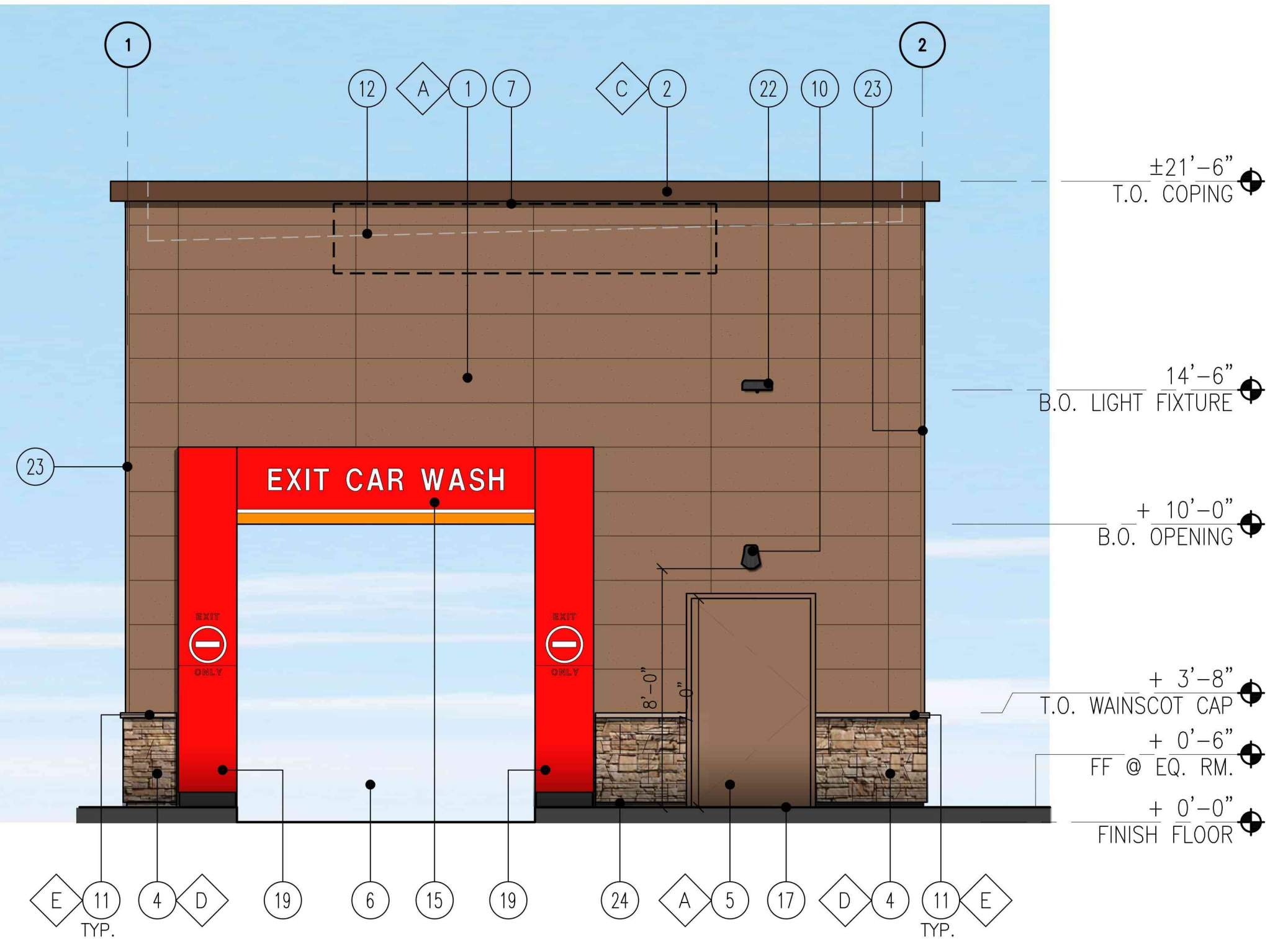
1. NICHHA FIBER CEMENT WALL PANEL SYSTEM
2. PREFINISHED METAL COPING
3. FRP WINDOW FRAME W/ GRAY TINTED GLASS WINDOW SYSTEM. PAINT WINDOW FRAME TO MATCH DARK BRONZE.
4. 1 3/8" THK. X 6" NICHHA KURASTONE HIGH FIBER CEMENT WAINSCOT
5. INSULATED FRP DOOR IN FRP FRAME. PAINT TO MATCH NICHHA PANEL AS NOTED.
6. WASH BAY OPENING.
7. POTENTIAL SIGN LOCATION (UNDER SEPARATE PERMIT)
8. ADDRESS SIGN NUMBERS, 8" HIGH & 1" CONTRASTING BACKGROUND
9. NOT USED
10. EXTERIOR WALL-MOUNTED LIGHTING ABOVE EXTERIOR DOOR
11. 1-1/2" HIGH NICHHA FIBER CEMENT CAP INSTALL PER MFR. SPECS.
12. LINE OF ROOF
13. ROOF DRAIN, SEE CIVIL DRAWINGS FOR CONTINUATION
14. OVERFLOW WITH SHEEP TONGUE, CONTRACTOR TO PROVIDE A CONCRETE SPLASH BLOCK AT THIS DOWNSPOUT LOCATION AT LANDSCAPE AREA.
15. PRE-FINISHED ACM PORTAL HEADER. PROVIDE POWER FOR LED LIGHTS AND BACK LIT LETTERS. COORDINATE WITH VENDOR.
16. 42" DIA. BOLLARD, WITH TRAFFIC YELLOW PLASTIC COVER
17. ISLAND/SIDEWALK WITH BROOM FINISH. SLOPED 1/4" PER FT. AWAY FROM BUILDING. REFER TO CIVIL DRAWINGS.
18. PRE-FINISHED ACM ENTRANCE PORTAL LEG W/ TIMER. PROVIDE POWER FOR TIMER. COORDINATE WITH VENDOR.
19. PRE-FINISHED ACM EXIT PORTAL LEG
20. PRE-FINISHED ACM PORTAL LEG
21. CONTROL/EXPANSION JOINT "E.J." LOCATION
22. WALL MOUNTED LIGHT FIXTURE, COLOR: BRONZE.

**FINISH SCHEDULE**

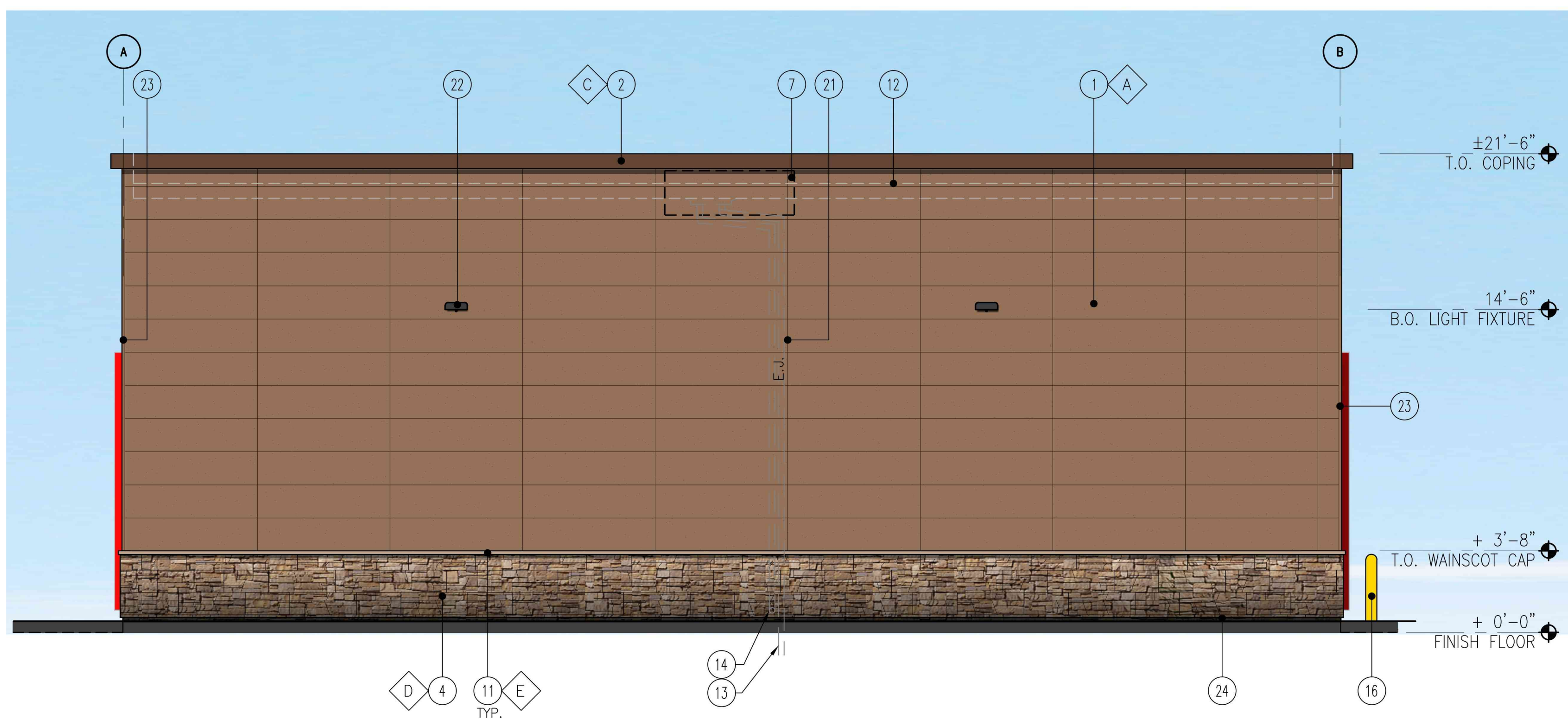
- A - \*\*\*NICHHA TUFF BLOCK  
- COLOR TO MATCH #SW 6095 TOASTY
  - B - 1" INSULATED, DOUBLE PANED GRAY TINTED GLASS
  - C - SHERWIN WILLIAMS #SW 6090 - JAWA  
- FIRESTONE MANSARD BROWN SR (USE FOR PRE-FINISHED METAL COPING)
  - D - \*\*\*NICHHA LEDGESTONE BLUFF
  - E - \*\*\*NICHHA CHISELED SILL TAN
- \*USE SHERWIN WILLIAMS MANUFACTURER ONLY.  
\*\*\* CONFIRM WITH OWNER'S REP



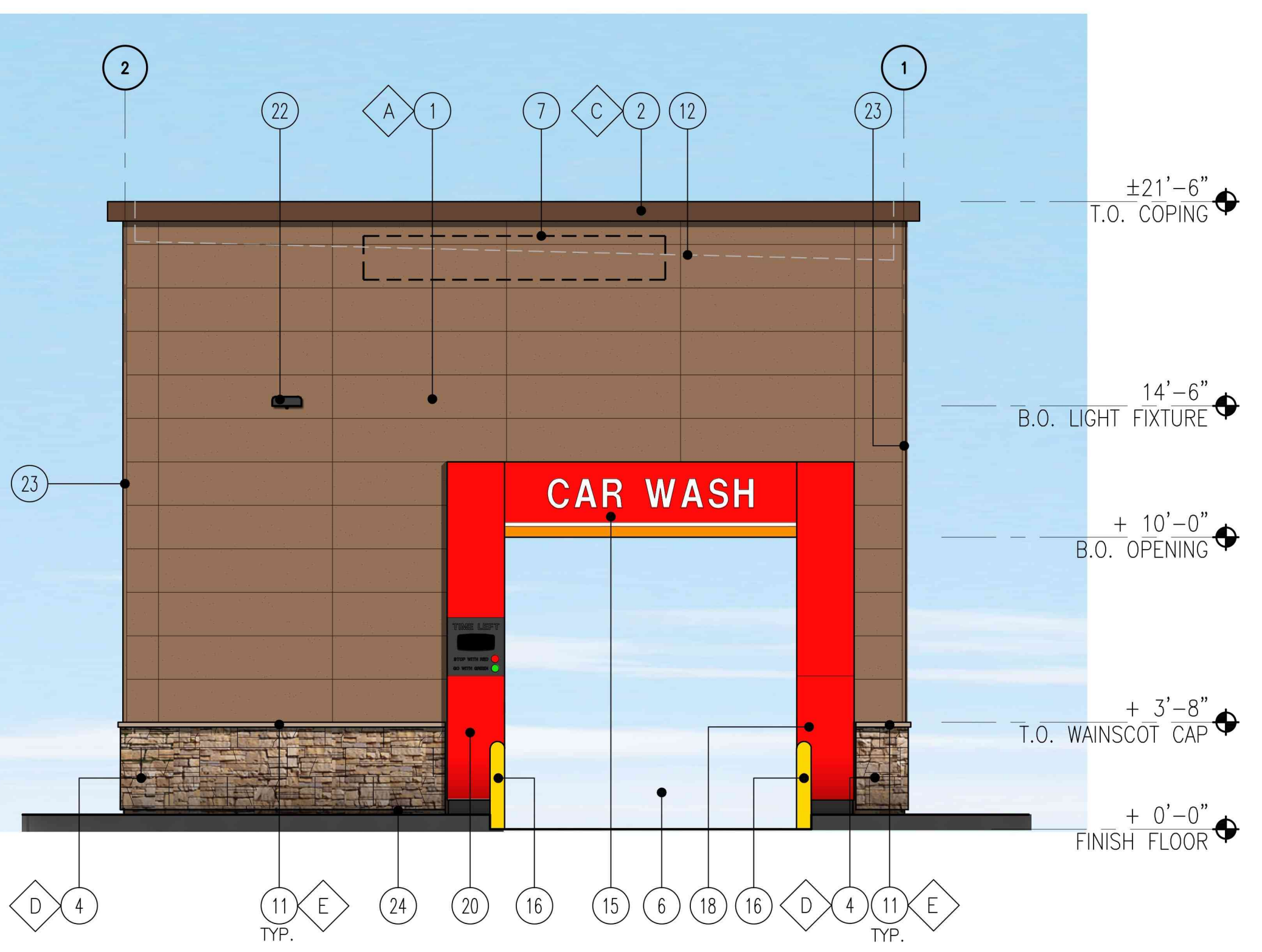
**4 SIDE ELEVATION - WEST**  
SCALE: 1/4" = 1'-0"



**2 REAR ELEVATION - SOUTH**  
SCALE: 1/4" = 1'-0"



**3 SIDE ELEVATION - EAST**  
SCALE: 1/4" = 1'-0"



**1 FRONT ELEVATION - NORTH**  
SCALE: 1/4" = 1'-0"

**KEY NOTES**

1. NICHHA FIBER CEMENT WALL PANEL SYSTEM
2. PREFINISHED METAL COPING
3. FRP WINDOW FRAME W/ GRAY TINTED GLASS WINDOW SYSTEM. PAINT WINDOW FRAME TO MATCH DARK BRONZE
4. 1 3/8" THK. X 6" NICHHA KURASTONE HIGH FIBER CEMENT WAINSCOT
5. INSULATED FRP DOOR IN FRP FRAME. PAINT TO MATCH NICHHA PANEL AS NOTED.
6. WASH BAY OPENING.
7. POTENTIAL SIGN LOCATION (UNDER SEPARATE PERMIT)
8. ADDRESS SIGN NUMBERS, 8" HIGH & 1" CONTRASTING BACKGROUND
9. NOT USED
10. EXTERIOR WALL-MOUNTED LIGHTING ABOVE EXTERIOR DOOR
11. 1-1/2" HIGH NICHHA FIBER CEMENT CAP INSTALL PER MFR. SPECS.
12. LINE OF ROOF
13. ROOF DRAIN, SEE CIVIL DRAWINGS FOR CONTINUATION
14. OVERFLOW WITH SHEEP TONGUE. CONTRACTOR TO PROVIDE A CONCRETE SPLASH BLOCK AT THIS DOWNSPOUT LOCATION AT LANDSCAPE AREA
15. PRE-FINISHED ACM PORTAL HEADER. PROVIDE POWER FOR LED LIGHTS AND BACK LIT LETTERS. COORDINATE WITH VENDOR.
16. 42" DIA. BOLLARD, WITH TRAFFIC YELLOW PLASTIC COVER
17. ISLAND/SIDEWALK WITH BROOM FINISH. SLOPED 1/4" PER FT. AWAY FROM BUILDING. REFER TO CIVIL DRAWINGS.
18. PRE-FINISHED ACM ENTRANCE PORTAL LEG W/ TIMER. PROVIDE POWER FOR TIMER. COORDINATE WITH VENDOR.
19. PRE-FINISHED ACM EXIT PORTAL LEG
20. PRE-FINISHED ACM PORTAL LEG
21. CONTROL/EXPANSION JOINT "E.J." LOCATION
22. WALL MOUNTED LIGHT FIXTURE, COLOR: BRONZE.

**FINISH SCHEDULE**

- A** - \*\*\*NICHHA TUFF BLOCK  
- COLOR TO MATCH #SW 6095 TOASTY
  - B** - 1" INSULATED, DOUBLE PANED GRAY TINTED GLASS
  - C** - \*SHERWIN WILLIAMS #SW 6090 - JAVA  
- FIRESTONE MANSARD BROWN SR (USE FOR PRE-FINISHED METAL COPING)
  - D** - \*\*\*NICHHA LEDGESTONE BLUFF
  - E** - \*\*\*NICHHA CHISELED SILL TAN
- \*USE SHERWIN WILLIAMS MANUFACTURER ONLY.  
\*\*\* CONFIRM WITH OWNER'S REP